

ProjectNotifyTM

User Guide

Standard Installation ————— 2

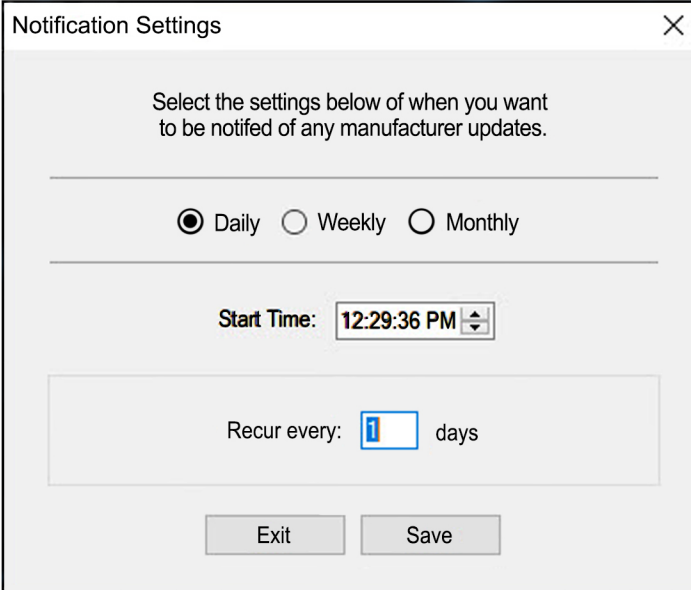
Network Installation ————— 4

Advanced Settings ————— 7

Product Requirements ————— 9

Standard Installation

Install ProjectNotify from www.projectmatrix.com. After the installation process has completed ProjectNotify will run you through a setup wizard, allowing you to choose your update schedule. ProjectNotify will check our website for new data at the specified interval you choose. You have select to have the software check daily, weekly, or monthly.



Notification Settings

Select the settings below of when you want to be notified of any manufacturer updates.

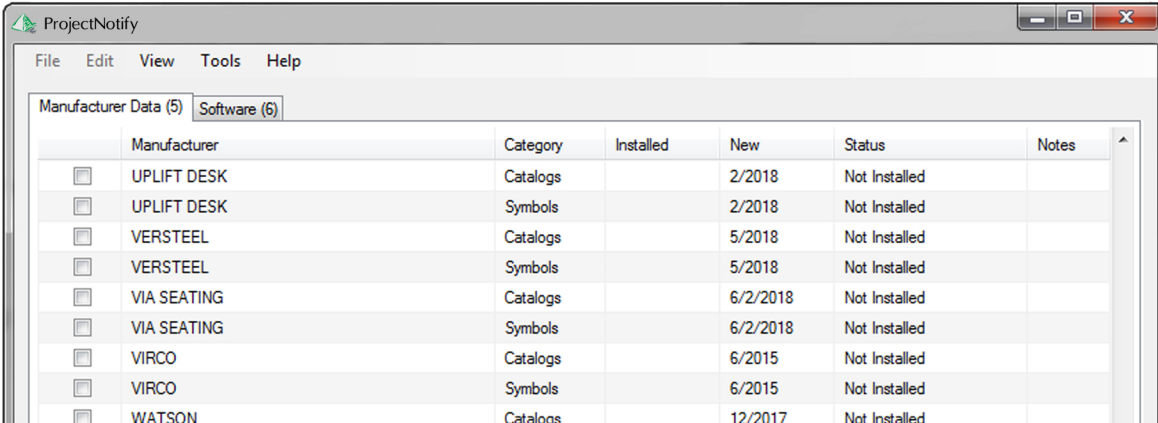
☒ Daily ☐ Weekly ☐ Monthly

Start Time: 12:29:36 PM

Recur every: 1 days

Exit Save

Once you have set up your notification settings, the main ProjectNotify screen will appear for you to choose which manufacturer's data you want to download. Simply check the box beside each one that you want to receive and click the "Update" button at the bottom of the screen.



ProjectNotify

File Edit View Tools Help

Manufacturer Data (5) Software (6)

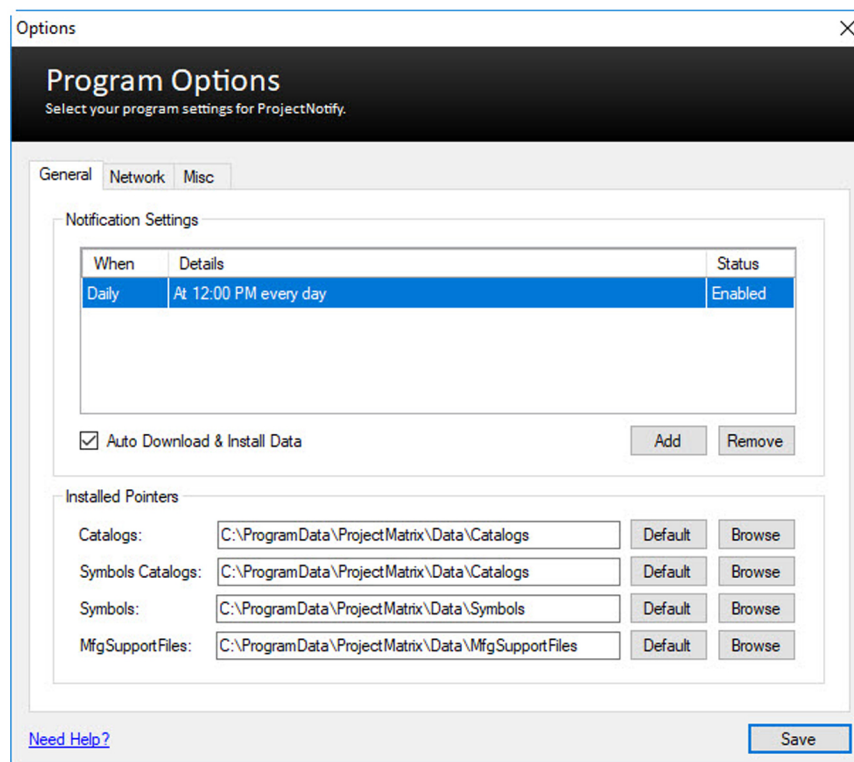
	Manufacturer	Category	Installed	New	Status	Notes
<input type="checkbox"/>	UPLIFT DESK	Catalogs		2/2018	Not Installed	
<input type="checkbox"/>	UPLIFT DESK	Symbols		2/2018	Not Installed	
<input type="checkbox"/>	VERSTEEL	Catalogs		5/2018	Not Installed	
<input type="checkbox"/>	VERSTEEL	Symbols		5/2018	Not Installed	
<input type="checkbox"/>	VIA SEATING	Catalogs		6/2/2018	Not Installed	
<input type="checkbox"/>	VIA SEATING	Symbols		6/2/2018	Not Installed	
<input type="checkbox"/>	VIRCO	Catalogs		6/2015	Not Installed	
<input type="checkbox"/>	VIRCO	Symbols		6/2015	Not Installed	
<input type="checkbox"/>	WATSON	Catalogs		12/2017	Not Installed	

This will update all of the manufacturer's data. A pop-up box will appear in the bottom right of the screen apprising you of the progress.



The Standard installation of ProjectNotify is now complete. If you notice that the defaults need adjusting they can be adjusted by going to the options menu, found under the Tools pulldown menu. Here you will find some advanced options and the ability to change the default locations for the data.

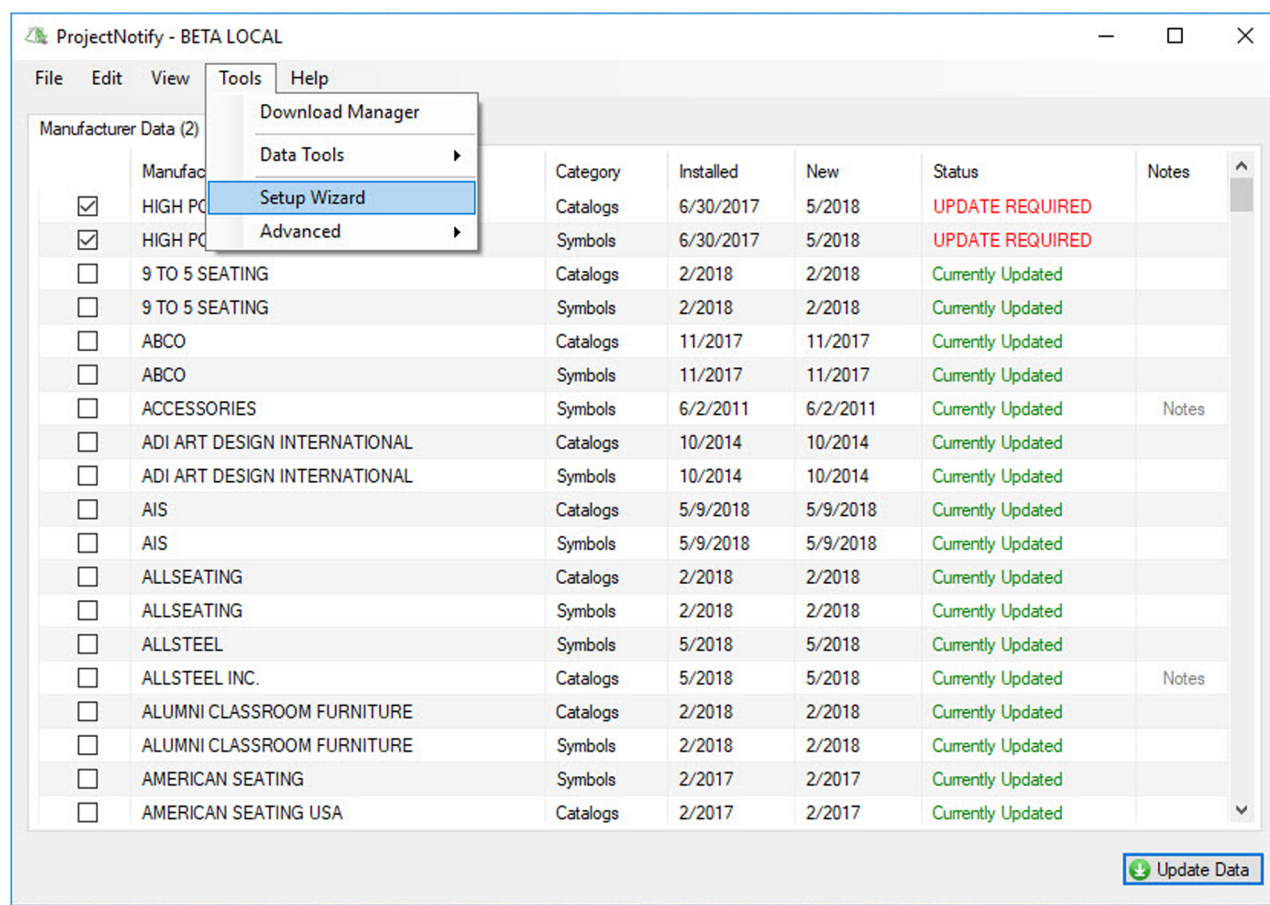
Options Dialog



ProjectNotify Network Installation

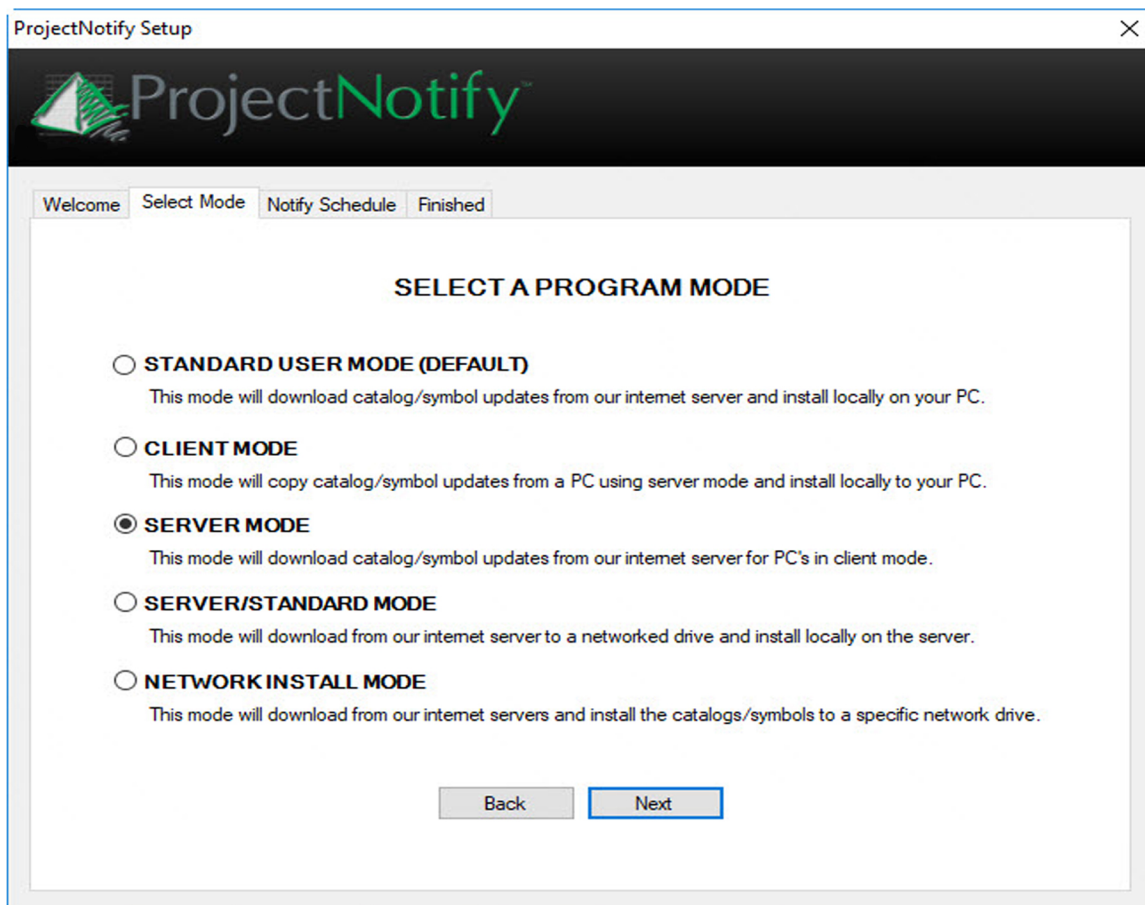
ProjectNotify's Client/Server mode allows you to have one computer (the Server) download and distribute updates to the rest of the computers (the Client) on the network. The advantage of using Client/Server mode saves bandwidth and time and allows the network administrator the ability to choose which data is available to users.

ProjectNotify's client/server settings can be setup either during initial setup or by going through the Setup Wizard again.



Server Mode

To set up Server Mode you will need to run the Startup Wizard. Go to Tools: Startup Wizard to run it. Choose the radial button located next to server mode to activate the computer as the server.



Set the Download Location to a directory that all of the client computers can access.

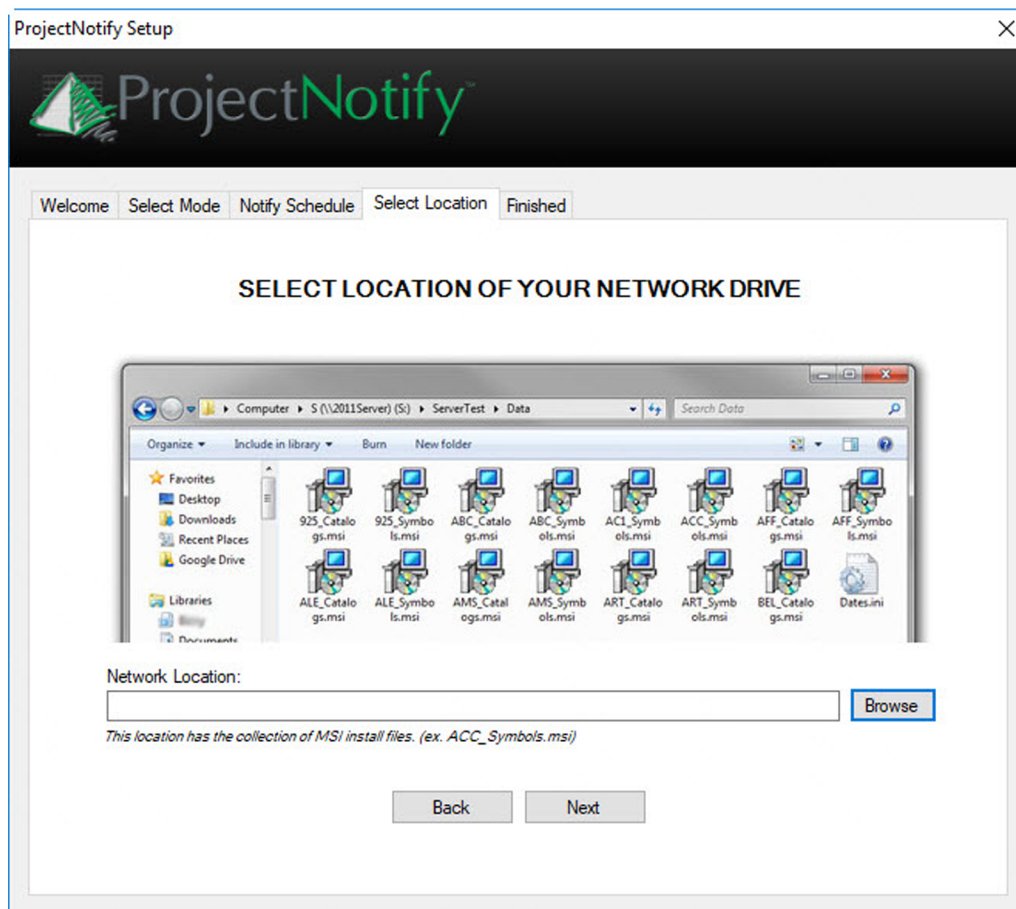
A best practice is to use a mapped drive that all computers can duplicate.

Example : (S:/ProjectMatrixData/)

By mapping the drives, nearly all network issues can be avoided.

Client Mode

Client Mode allows the user to download and install the data from a local computer (Server) without the need to access the internet. This helps to speed up the download process and reduces amount of data downloaded from the internet. To activate Client mode simply select the radio button next to Client Mode and set your sever path to the location that was assigned in Server Mode



In this dialog you can also choose where you want the temporary installation files to be saved. You can choose the Auto Download & Install checkbox if you wish for the software to automatically update your files when the served is updated without prompting you.

Advanced Settings

Program File Locations:

Program Files :

C:\Program Files (x86)\ProjectMatrix\ProjectNotify

Download Manager List:

C:\Program Files (x86)\ProjectMatrix\ProjectNotify\downloads.xml

Temp Directory for Downloads:

C:\Users**Username**\AppData\Local\Temp\ProjectMatrix Installs

Beta Test File (TESTING ONLY):

C:\Program Files (x86)\ProjectMatrix\ProjectNotify\beta.test

Catalog and Symbol Pointer Files

C:\ProgramData\ProjectMatrix\PSInstalledPointer.ini

C:\ProgramData\ProjectMatrix\PSSymbolsPointer.ini

Firewall Exceptions:

The paths/ports below are required for ProjectNotify to work.

Port: 80

Database Location (PHP) : <http://www.projectmatrix.com>

Download Location : <http://remote.projectmatrix.com>

Download Location (700MB & Above) : <https://s3.amazonaws.com/ProjectMatrix>

Settings File:

All settings are stored in the path below except for the pointers. A new folder will be created with the version number when upgraded.

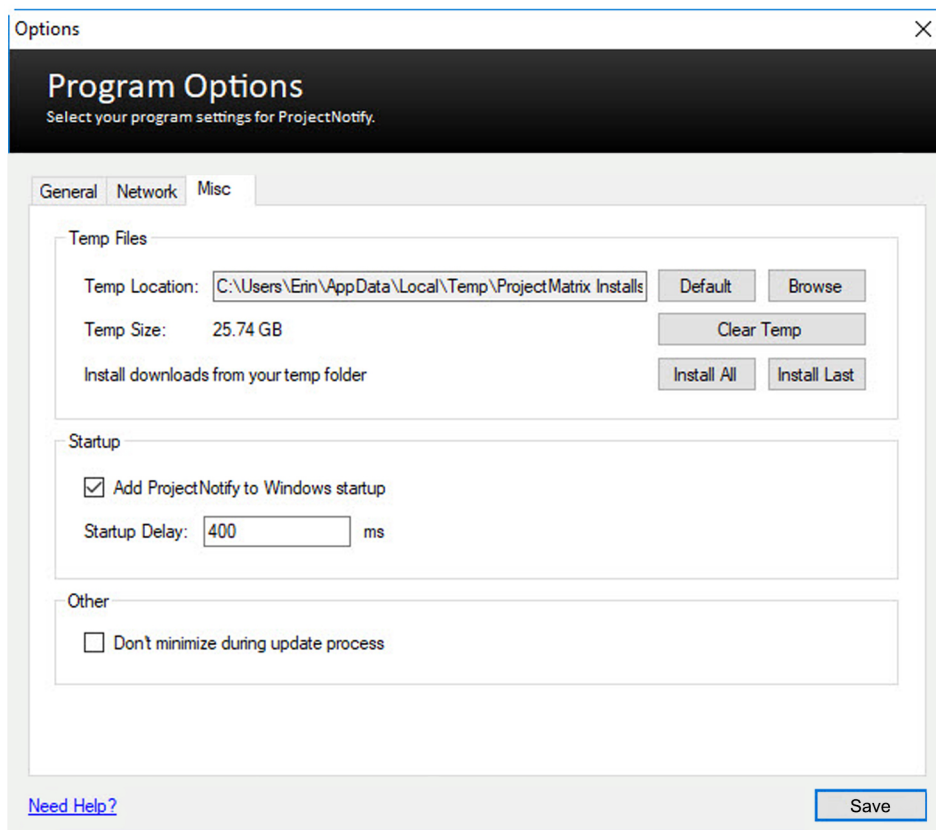
C:\Users**Username**\AppData\Local\ProjectMatrix\ProjectNotify.exe_Url_itaz2oey0evrmr0vk4u2vuonnqxdpcs**Version Number**\user.config

Add to Startup

You can set ProjectNotify to startup automatically when your computer restarts. This helps ensure that your updates happen automatically in the background

To set this up:

1. **Tools > Advanced > Options**
2. Click on **Misc** tab
3. Check the box “Add ProjectNotify to Windows startup”
4. You can set a startup delay to speedup your overall windows startup





Hardware & Software Requirements

- Windows OS (Windows XP and above)
- NET 4.0 Framework
- Internet Connection
- Your user account must be a power user or higher.